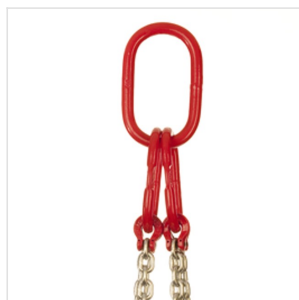
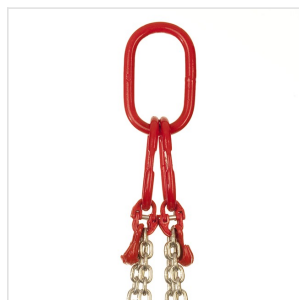



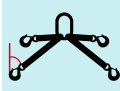


## Anschlagketten 4BL-C

4-Strang, Güteklasse 8

EN 818 / Güteklasse 8



Art-Nr.	Kette Ø	Tragfähigkeit		Preis exkl. MwSt (B)	
	4BL-C				
		0-45°	45-60°		
	mm	kg	kg	<b>Länge 1 m</b>	+ m
062.440.061	6.0	2300.0	1650.0	<b>209.00</b>	48.00
062.440.081	8.0	4300.0	3000.0	<b>273.00</b>	64.00
062.440.101	10.0	6700.0	4800.0	<b>359.00</b>	92.00
062.440.131	13.0	11200.0	8000.0	<b>599.00</b>	148.00
	4BL-C-P (verkürzbar)				
	mm	kg	kg	<b>Länge 1 m</b>	+ m
062.440.062	6.0	2300.0	1650.0	<b>241.00</b>	48.00
062.440.082	8.0	4300.0	3000.0	<b>307.00</b>	64.00

Art-Nr.	Kette Ø	Tragfähigkeit		Preis exkl. MwSt (B)	
062.440.102	10.0	6700.0	4800.0	<b>415.00</b>	92.00
062.440.132	13.0	11200.0	8000.0	<b>687.00</b>	148.00